



# One Stop Solution for EMS service

**Ivan Ho**  
February 16, 2008

# Company Mission

- ❖ Be the Best in Class of Electronics EMS service provider
- ❖ Provide the Best support to Customers with Quality and Performance
- ❖ Customers satisfaction oriented
- ❖ Provide One Stop Solution for EMS service

## YH's Milestones

- ❖ 1994 YH Zhuhai founded by Mr. Fong
- ❖ 1996 entering game accessory products
- ❖ 1997 Set up Plastic Tooling and Injecting Molding operation
- ❖ 1998 Approved by Sony as a Game Pad supplier
- ❖ 1999 Obtained ISO9001 certification
- ❖ 2001 Moved factory to Nanping technology park Zhuhai
- ❖ 2002 Signed contract with Asoka to produce PLC product
- ❖ 2004 Delivered 5 millions pcs Wireless Game Pad
- ❖ 2004 Set up SMT lines to support customers need
- ❖ 2005 Obtained ISO14000 certification
- ❖ 2006 Being ROHS compliant factory

## YH's business attitude

- ❖ Partnership with customer's and provide best supports, flexibilities and good services to our customers
- ❖ Growth with the customers
- ❖ Willing to invest into technology together with customers
- ❖ Provide a short cycle time benefit to customers
- ❖ Meet and exceed customer's quality expectation

# YH's Customers

Powerline	         
Game Accessory	      
PC	   
Industrial	 

# YH Basic Information

## YH Location :

### ❖ Transportation

#### ❖ Via Airports

- ❖ Hong Kong , 2Hours ;
- ❖ Guangzhou , 2Hours ;
- ❖ Macau , 50Min. ;
- ❖ Shenzhen , 2Hours ;
- ❖ Zhuhai , 20Min. ;

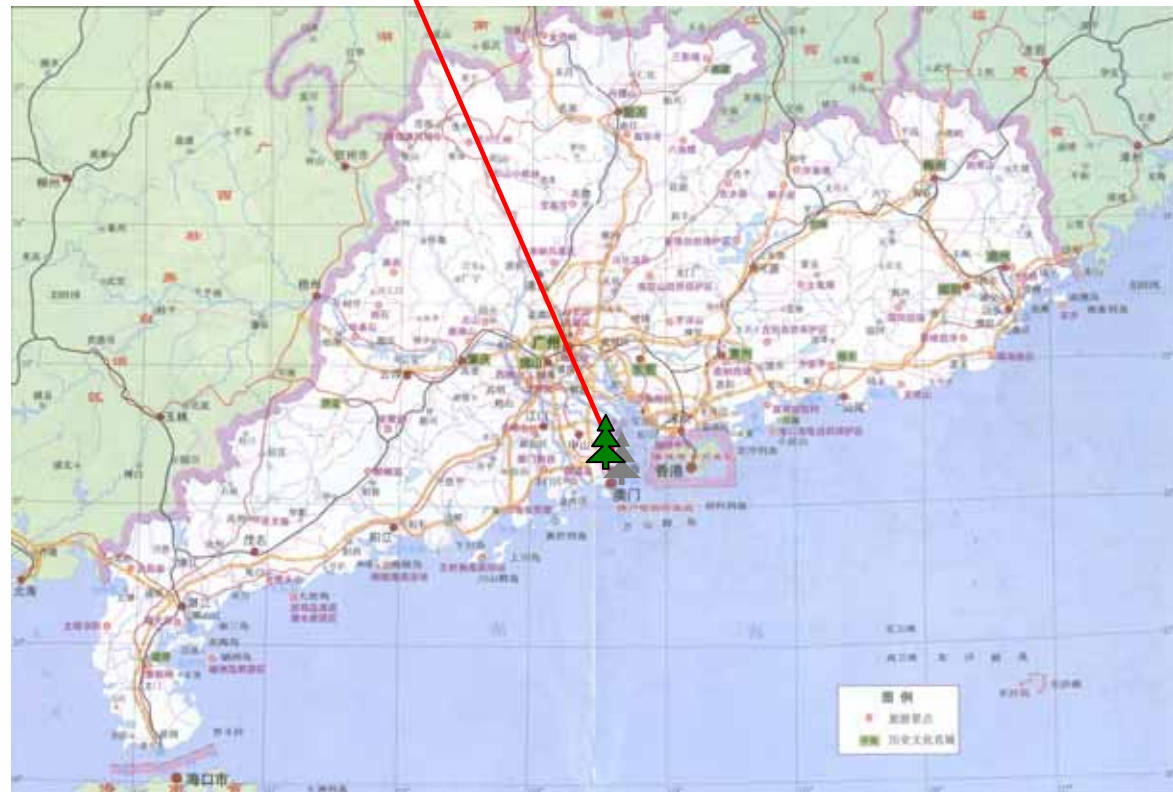
#### ❖ Via Seaport

- ❖ Zhuhai , 15Min. ;
- ❖ Macau , 30Min. ;
- ❖ Shenzhen , 70Min. ;
- ❖ HK , 70Min. ;

#### ❖ Via Expressways

- ❖ 2 Expressways

ZHUHAI YH electronics Co., Ltd



# YH Basic Information



# Manufacturing Facilities

- ❖ Factory Area:  
28,000 m<sup>2</sup>
- Facilities Include:
- ❖ Production Area :  
19000 m<sup>2</sup>
- ❖ Worker  
Dormitories :  
9000 m<sup>2</sup>





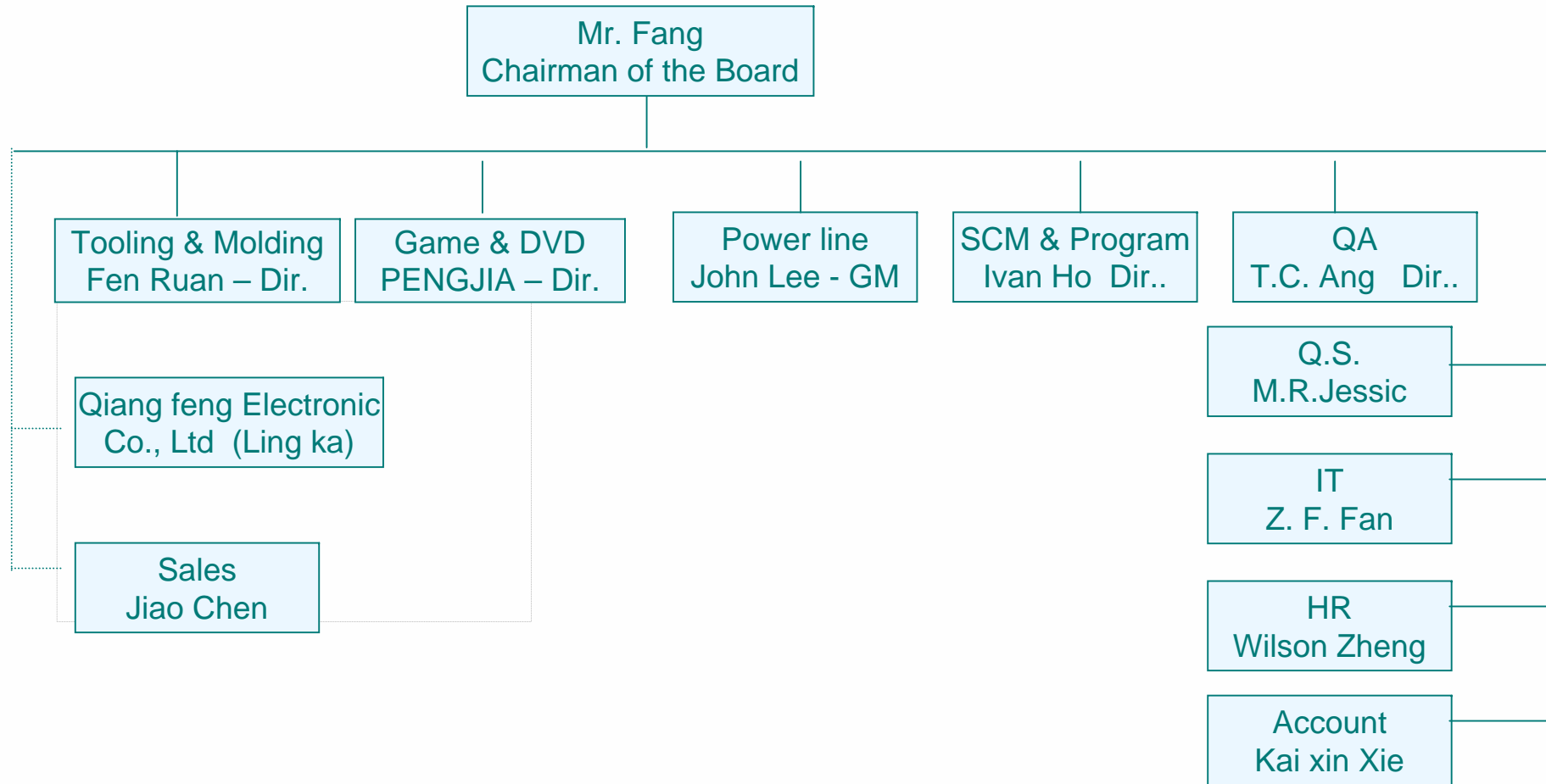
# YH Basic Information

- ❖ Facility:
  - ❖ Land space 28000sq.m
  - ❖ 4 SMT lines
  - ❖ 12 COB Machines
  - ❖ 31 molding machines
  - ❖ 15 Assembly lines
  - ❖ 1200 employees
  
- ❖ Business Focus:
  - ❖ Power line Communications
  - ❖ Game Accessories
  - ❖ Computer peripherals
  - ❖ Industrial Products,
  - ❖ Medical Products
  
- ❖ Quality Certifications:
  - ❖ ISO9001:2000
  - ❖ ISO14001:2004

## Why YH?

- ❖ Global & Localize Materials Sourcing
- ❖ Provide competitive cost to customers
- ❖ Sufficient technical resources
- ❖ Seamless NPI team
- ❖ In-house Plastic tooling & molding capability
- ❖ Dedicate team to support customers
- ❖ On time delivery

# YH's organization



# Manufacturing Capabilities

- Plastic Mold Tool Shop
- Plastic Molding
- SMT
- AOI Inspection Process
- COB
- Conventional Wave Soldering
- Stamp Printing
- Assembly
- In house Jig & Fixture capability
- Ultrasonic Welding (Plastic Case-up)
- Reliability Testing

# Major Equipment List

Equipment	Manufacture	Model	Qty
CNC Machine Center	Cincinnati	ARROW VMC-1250C	1
EDM Machine	Super Century	Super-430	1
EDM Machine	SANE KUEI	SKM M60H 30A/T60Z-30A/T50Z-30A	5
MOLDING Machine	UNI-COM	UN-50/100/180/200/250/260/520/1380	29
Molding Machine	Sumitomo	SG125/SG150	2
High Speed Chip Mounters	JUKI	KE-2050M/KE-2050	8
Fine-pitch IC Mounters	JUKI	KE-2060	2
Reflow OVEN	SUN EAST	Win-4008(Lead-free)/Win-4007	3
Wave Soldering Machine	JT	WS-350PC-B	2
Automated Optical Inspection	Marantz	22X	2
COB Machine	ASM	AB510/AB520/AB530	12

# Tooling & Molding Capabilities



- ❖ XYZ precision of CNC
- ❖ 0.001mm ; 0.01mm
- ❖ Tooling Dimension
- ❖ Max : 1500mmx800mmx1000mm  
Min : 150mmx150mmx200mm
- ❖ Molding Process
- ❖ Molding & Coating & Silk print
- ❖ Tooling & Molding Inspection
- ❖ Dimension measure & Visual Inspection & Image Projection Test & Light Box Test
- ❖ Molding Capabilities
- ❖ 70000set/day

# SMT Capabilities



- ❖ **Board Size**
  - ❖ Max 330mm x 250mm
  - ❖ Min 50mm x 30mm
- ❖ **Component Package**
  - ❖ Max 54mm x 54mm BGA
  - ❖ Min 0201chip
  - ❖ 0.4mm fine-pitch TQFP
  - ❖ 0.25mmCSP/UBGA
- ❖ **Process**
  - ❖ Double-side reflow
  - ❖ Lead-free reflow
- ❖ **Inspection**
  - ❖ Automated Optical Inspection & Visual Inspection & Function/Application Test
- ❖ **Capabilities**
  - ❖ 2.5Million Chip/day

# COB Capabilities



- ❖ Board Size
  - ❖ Max 101mm x 152mm
  - ❖ Min 10mm x 15mm
- ❖ Aluminum Wire Dia
  - ❖ Max 50um
  - ❖ Min 20um
- ❖ XY Precision
  - ❖ 0.625um
  - ❖ 0.0036°
- ❖ Inspection
  - ❖ Function /Application Test & Visual Inspection
- ❖ Capabilities
  - ❖ 2Million Wire/day



# Assembly Capabilities



- ❖ **Assembly Line**
  - ❖ 15 FA Line
  - ❖ 800Employees
- ❖ **MI Line**
  - ❖ 2 MI Line
  - ❖ 100Employees
- ❖ **Process**
  - ❖ Conventional Wave Soldering
  - ❖ Lead-free Wave Soldering
  - ❖ Ultrasonic Welding(Plastic Case-UP)
- ❖ **Inspection**
  - ❖ Function /Application Test & Visual Inspection
  - ❖ PTS Test
  - ❖ Reliability Test

# Test Equipment List

Equipment	Manufacture	Model	Note
Cycle sag simulator	SANKI	SKS-1105	
High Frequency Noise sunatator	SANKI	ENS-24XE	
Electrostatic Discharge Tester	SANKI	SKS-0220	
Frequency chart tester	HAMEG	HM501	0.15MHz~1050MHz
Oscillograph	Tekteronix	TDS3032B	300MHz
Signal generator	Well star	AG-101	10~100MHz
Constant temp. constant humid machine	MINK	K040421166	
High temp. Burn-in tester	MINK	Cube Meters	
Withstanding voltage test	Chun san	CS2671	1~10KV
Image projection tester	AOKE	VMS-3020F	0.01mm
Drop tester	ICITM	PK318	300~1500mm
Shake tester	ICITM	RT-50AC	40Kg/5~200Hz/20g
X-ray Fluorescence Spectrometer	SKYRAY	EDX2800	1ppm~99.99%

# Quality Capabilities

- ❖ Suppliers/Parts qualification
- ❖ Continuous improvement program
- ❖ Process and equipment qualification
- ❖ Training program
- ❖ Statistical process control system

# EDI and Customs Clearance

- ❖ YH Customs Import/Export declaration team
- ❖ EDI with China Customs office
- ❖ Class “A” enterprise classification
- ❖ “Priority” privileges with customs clearance
  - First priority with customs clearance documents

# Inventory Control ( ERP system)

- ❖ ERP system to generate Supply and demand
- ❖ Consigned warehouse can be set for customer with monthly reporting and reconciliation
- ❖ Provide update reports to customer as required

# Current Quality Certifications

Date	Name	Certification Company
Apr. 1999	ISO9001:1994	Moody
Apr. 2002	ISO9001:2000	Moody
Nov. 2005	ISO14001:2004	Moody

# Scheduled Certifications

Schedule	Name	Certification Company
Q2 2008	QS9000	TUV
Q1 2008	TL9000	TUV
Q2 2008	SA8000	TUV

# Quality Certifications





# Power line networking product capabilities

## ❖ Assembly Process



- ❖ Molding
- ❖ SMT
- ❖ Automated Optical Inspection
- ❖ Lead-free Wave Soldering
- ❖ Programming Firmware
- ❖ Final Assembly
- ❖ Functional Test
- ❖ PTS Test
- ❖ Burn In
- ❖ Hi Pot
- ❖ Programming Mac/Serial#/Barcode
- ❖ Reliability Test

# Powerline Product

<p>PL8950 85Mhz Gateway</p> 	<p>PL8650 85Mhz Smart Bridge</p> 	<p>PL9550 85Mhz Wireless AP</p> 	<p>PL9650 85Mhz ETH. Adaptor</p> 
<p>PL8750 85Mhz Smart Tap</p> 	<p>PL9720 14Mhz USB Adaptor</p> 	<p>PL9520 14Mhz Wireless AP</p> 	<p>PL9640 14Mhz ETH Adaptor</p> 

# Game Accessory Product





**NAZAR**  
PERFECT YOUR DIGITAL LIFE

**SET-TOP BOX**



DTR-002



DTR-001

A gateway that provides digital video to the home.



DTR-003





**NAZAR**  
PERFECT YOUR DIGITAL LIFE

**FM TRANSMITTER**

Supports iPod player with USB recharger



**88 KEY MULTIMEDIA KEYBOARD WITH CARDREADER**

CF/MD MS/MS Pro SD/MMC SM/XD

Super slim(1cm)



**KEYPAD WITH 3HUB**



**WORLD POWER ADAPTER**

## Industrial products





珠海躍華電子有限公司  
YUEHUA ELECTRONICS CO.,LTD.

**Thank You!**